

X300_HF



**EUROTHERM
DRIVES**

Feedback system HIPERFACE®



**PRODUCT
DESCRIPTION**



Further documentations associated with this document

UL: 07-02-09-01



Product – manual 637+

© **EUROTHERM** Drives Limited.

All rights reserved. No portion of this description may be produced or processed in any form without the consent of the company.

Changes are subject to change without notice.

EUROTHERM has registered in part trademark protection and legal protection of designs.
The handing over of the descriptions may not be construed as the transfer of any rights.

Made in Germany, 2002

“**HIPERFACE**®” registered trade-mark from the company Max Stegmann GmbH



CONTENTS

	Page
The most important thing first.....	4
1 General	5
2 Mechanical design	7
3 Electrical block diagram.....	7
4 Feedback Cable	8
5 Commissioning / Configuration	9
6 HIPERFACE® – Configuration	10
7 Maintenance, Repair and Service	17
8 Modification Record	18



The most important thing first

We thank you for the trust that you have shown in our product.

The operating instructions presented here serves as an overview of the technical data and features.

Please read the operating instructions before putting the product to use.

If you have any questions, please contact your nearest Eurotherm representative.

Improper application of the product in connection with dangerous voltage, can lead to injuries.

In addition, damage can also occur to motors or other products.

Therefore please observe strictly our safety precautions.

Topic: Safety precautions

We assume that as an expert, you are familiar with the relevant safety regulations, especially in accordance with VDE 0100, VDE 0113, VDE 0160, EN 50178, the accident prevention regulations of the employers liability insurance company and the DIN regulations and that you can use and apply them. Also the CE - regulations are to be observed and guaranteed.

Depending on the kind of application, additional norms e.g. UL, DIN are to be observed.

If our products are employed in connection with components from other manufacturers, their operating instructions are also to be strictly observed.

1 General

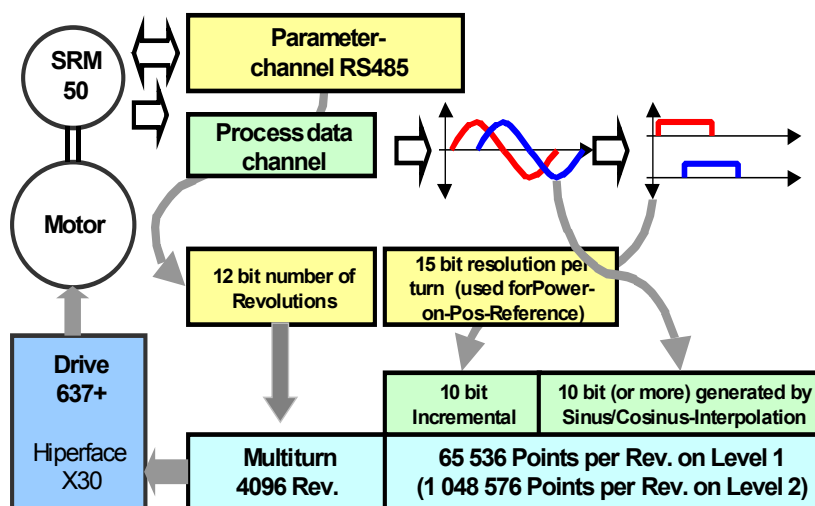
The term “**HIPERFACE**®” is derived from “**High Performance Interface**“ and typifies a certain kind of connection from encoder towards controller.

The system is a compound of incremental- and absolute-encoder. The absolute value will be generated at power-on of the device and transmitted via RS485 interface to an external counter, which counts further incremental with a sine/cosine track, starting from this absolute value. Optionally you can choose between a Singleturn or a Multiturn variant.

Advantages of feedback -HIPERFACE® system - over the traditional resolver system

- Multiturn possible
- High resolution possible by sine/cosine interpolation
- High accuracy
- Operable instantly after power-on, without search for home reference

Parameter-channel for Absolute Position and general Data
 Process data-channel for Analog Sine and Cosine signal



Technical data	Version LEVEL 1	Version LEVEL 2
Encoder-Types		being prepared
Stegmann SRS (Singleturn)	Ok	
Stegmann SRM (Multiturn) 4096 Revolutions	Ok	
Number of sine- cosine period per revolution	1024	
Encoder - EEPROM	Not used	
Baudrate RS485	9600 Baud	
Position - Preset	Stored in EEPROM of drive	
Max. Speed	6000 rpm	
Validated resolution per turn	65536	
Speed - Ripple (reference – measurements AC MHM 0090-4/1-3)	< 0.3% at 4000 rpm	
Max. mechanical Position - Error	+0.75 min.	
FIRMWARE 637+ Version	>=6.13	
EASYSIDER Version	>=6.15	



Important!

Kindly note Chapter 7: Maintenance, Repair and Service



General

Singleturn:

On applications of HIPERFACE® motors AC MHS only one revolution can be absolute. The feedback does not differ from the standard Resolver handling.

Multiturn:

HIPERFACE® motors AC MHM provide an absolute resolution of 4096 revolutions. The absolute position is available instantly (without search for home reference). At initial start-up or replacement of motor or controller, an absolute position related to the mechanical system must be set and saved in fail-safe store. (see Chapter 6, Step 4)

Operation of motors from other manufacturers:

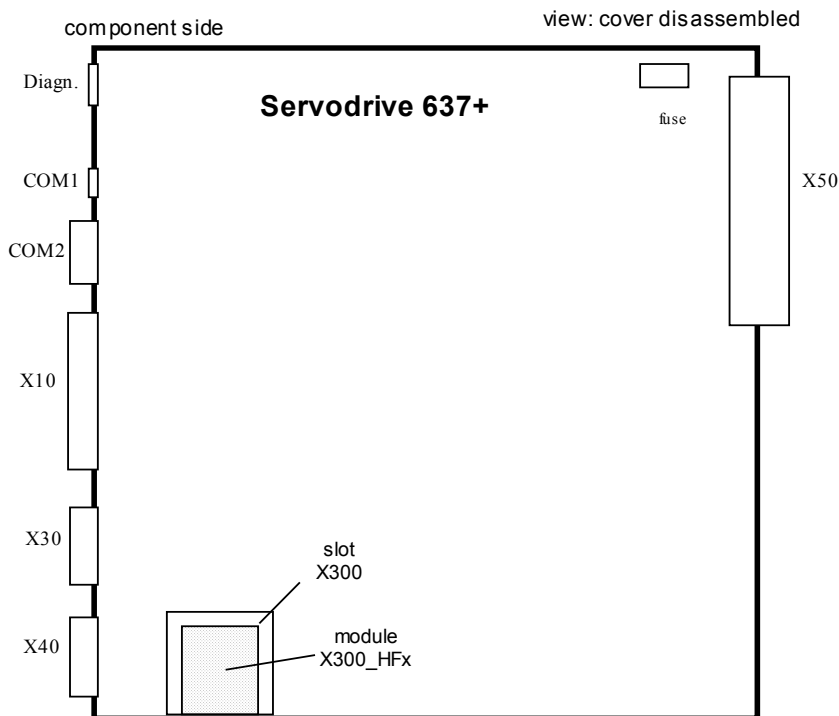
Operation of motors from other manufacturers requires general consultation with Eurotherm, especially for evaluation of proper encoder adjusting parameters.

Machine starting:

On power-on of a servo axis, the absolute mechanical position stored in the encoder will be transmitted via parameter channel.
To prevent position errors at starting, the motor should not move during power-on.

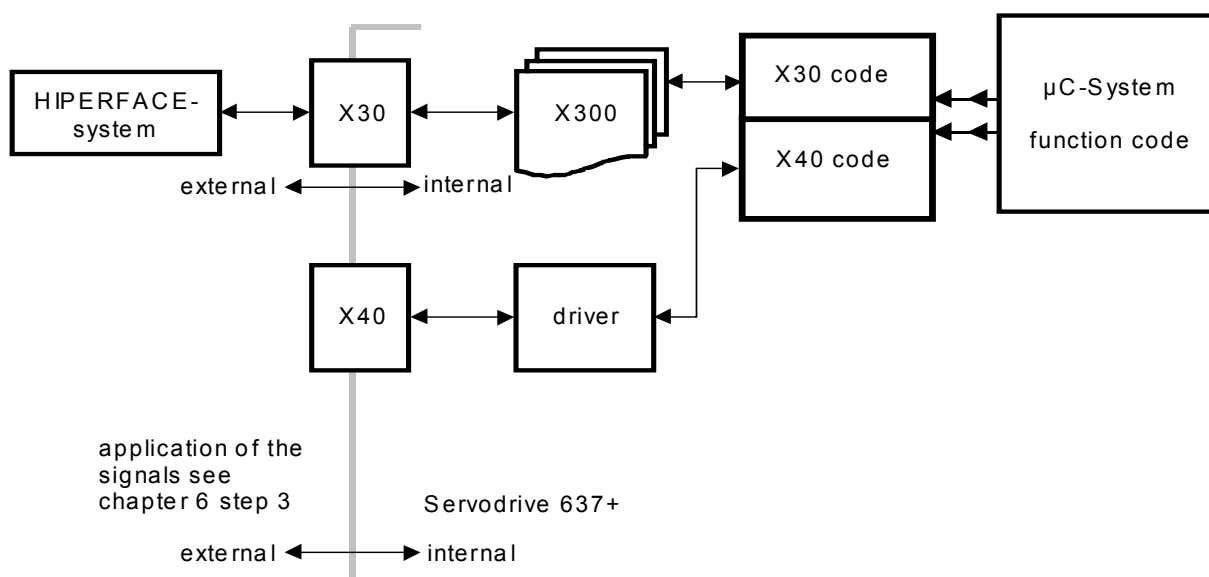
2 Mechanical design

Layout of controller board



Note: The module X300_HFx can only be reached after removing the cooling plate.

3 Electrical block diagram



4 Feedback Cable

Hiperface connector

motor side

Eurotherm - motor size 1...3
Model: AC MHS / MHM

regulator side

Eurotherm - servo drive
Model: 637+

view solderside

keying

case - black

view solderside

SIR ST.0200.0001	KIR-B KA.0003.6301		SUB - D 09 S/M ST.1002.2001
PIN - Nr.	color	function	PIN - Nr.
1	white	sin +	4
2	brown	Ref sin	8
3	green	cos +	3
4	yellow	Ref cos	7
9	pink	Data +	9
10	gray	Data -	5
11	red	10 VDC	2
12	blue	GND	1
case		screen	case

 EUROTHERM ANTRIEBE				Maßstab / scale:	
				Typ / model: KK H MHx-xx.x/B	
		Bear.	22.04.02	DL	Bezeichnung / designation: Blue Hiperface cable for Eurotherm AC MHS / MHM motors and 637+ servo drives
		Gep.	23.04.02	EH	
		Norm			
		Zeichnungsnummer / drawing No:			Blatt sheet 1
		Z-RK.8630.xxxx			
Zust	Änderung	Datum	Name	Ursprung	Dateiname / File name: Z-RK.8630.xxxx_E.cdr

Kindly note keying of plugs / motor flange connectors !

Important:

The signals of the HIPERFACE[®] encoder are sensitive signals with low amplitude of 0,5 V. Please take special care of correct screening of the encoder cable and the motor cable. Further motor cables and encoder cables must run separately. Please observe minimum space of 300 mm.

Note:

Setting in software EASYRIDER[®] Windows

Configuration – Motor – Temperature sensor must be: **sensor type “NTC“**

5 Commissioning / Configuration



CAUTION !

**Wiring errors or incompatible operation may cause unpredictable motions.
Avoid danger for man and machine !**

Preparation

- Expertise of the function of a 637+ Servo controller (see documentation 07-02-09-01)
- For PC-link use the Eurotherm communication software EASYRIDER® Windows. This chapter presumes the knowledge of how to handle EASYRIDER. Suggestions: Use test equipment to train yourself. EASYRIDER® - Windows contains interactive HELP functions.
- For security reasons the access to several functions is blocked by password. Commissioning has to be executed by trained staff only.
- Users may have their application-adapted commissioning method when familiar with the product, on their own responsibility.
- The system must be in accordance with all valid safety specifications. The function of all safety equipment (limit-switches for example) has to be checked.



6 HIPERFACE® – Configuration

The following steps relate to special configuration settings for HIPERFACE®.
Know-how of general controller configuration is presupposed.

Step 1

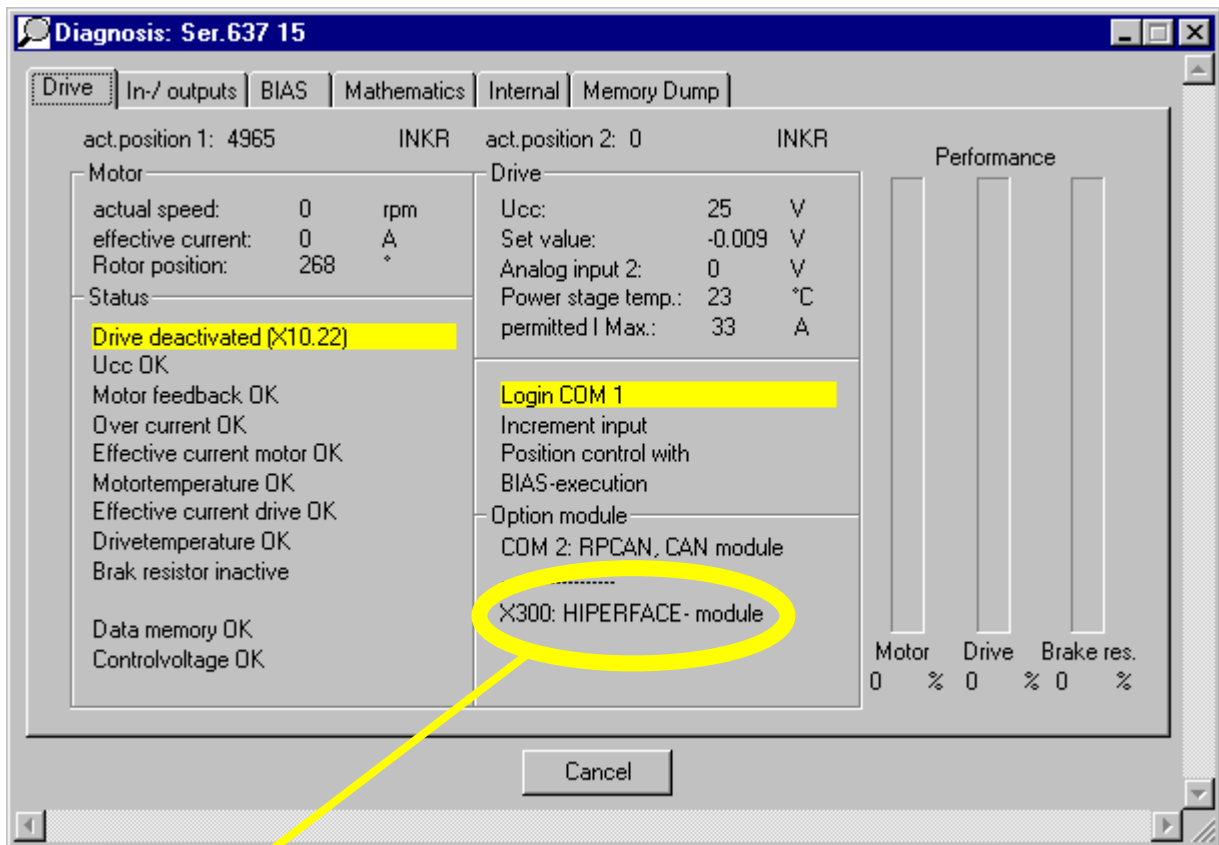
Establishing preconditions

- PC operable with **EASYRIDER® Windows - Software** from Version 6.15 onwards
- Interface connection PC with controller (COM1/RS232) from Firmware 6.13 onwards
- Connection HIPERFACE® with controller (X30 connection)
- Control supply voltage +Us (24 V DC) power-on

Step 2

Menu: **Diagnosis \ Diagnosis Drive**

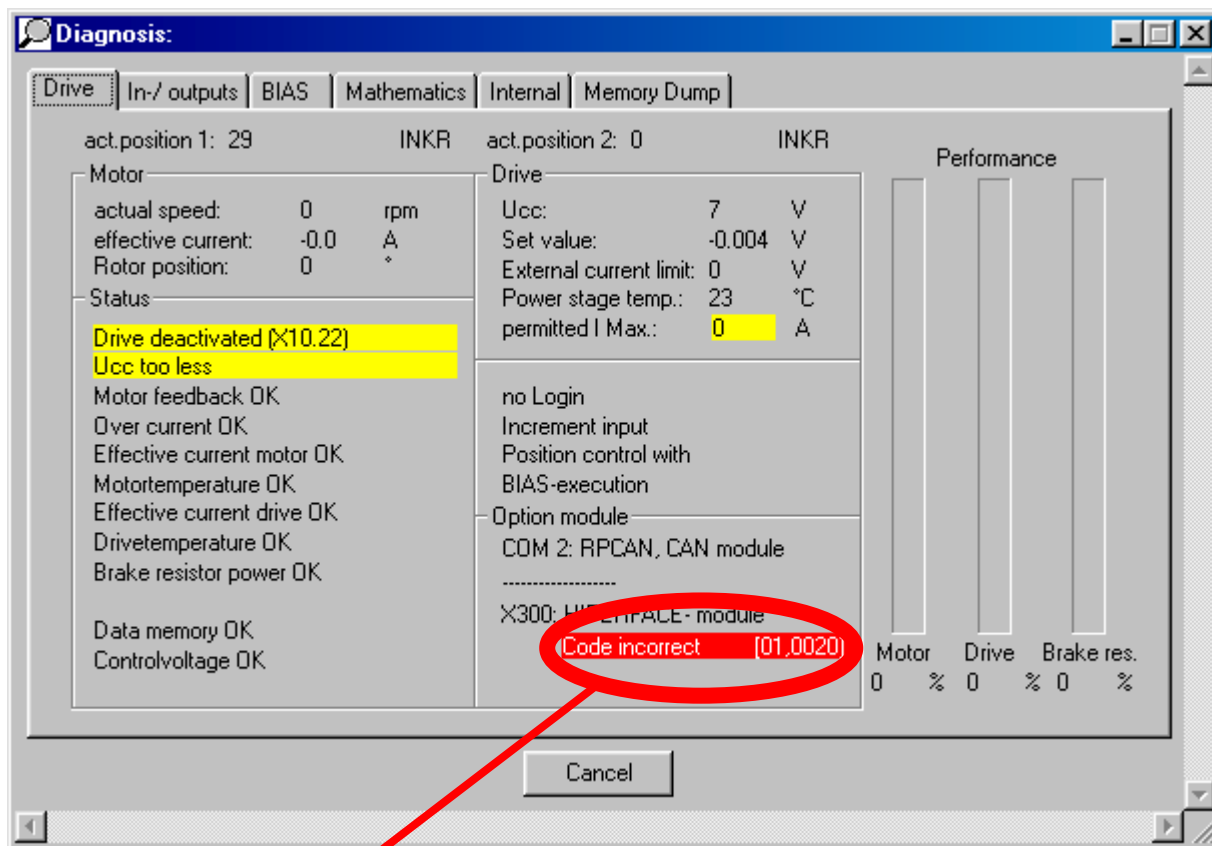
press F9



If HIPERFACE® module X300_HFx is identified by software - go to Step 3

HIPERFACE® – Configuration

Step 2 (continued)



Status report appears under fault condition only

Status reports possible	Interpretation / Cause	Counter-measure
no module	no X300 module mounted	mount module
unknown module	the module identification is not known to the Firmware	load more recent Firmware or replace module
module not supported	module is not supported by the Firmware	load more recent Firmware
Code unknown	Firmware does not support this (more recent) code	load more recent Firmware
Code not up to date	this code is not supported by the Firmware	load more recent function code
wrong Code	loaded code does not suit the X300 module	load proper function code
Code incorrect	code does not suit the X40 setting	check X40 configuration
download error	at download of X30/X40 function code an error occurred	re-load function code

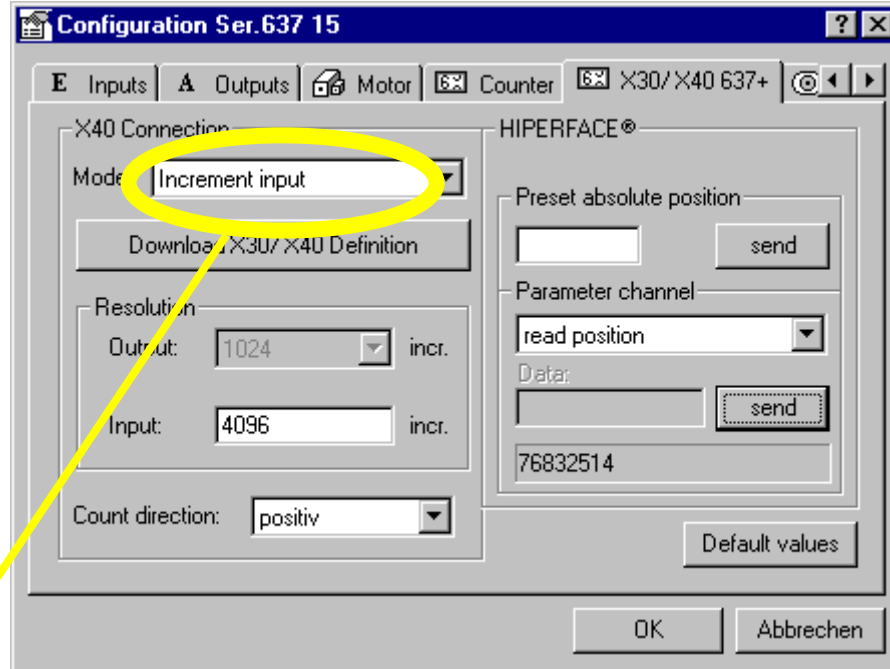


HIPERFACE® – Configuration

Step 3

Menu: Configuration \ X30/X40 637+

X40 Connection / Mode:



Select as X40 connection mode: Increment input or Increment output.

For detailed X40 operating mode instructions please see 637+ manual 07-02-09-01 Chapter 2.5.

X40 Connection / Download X30/X40 Definition

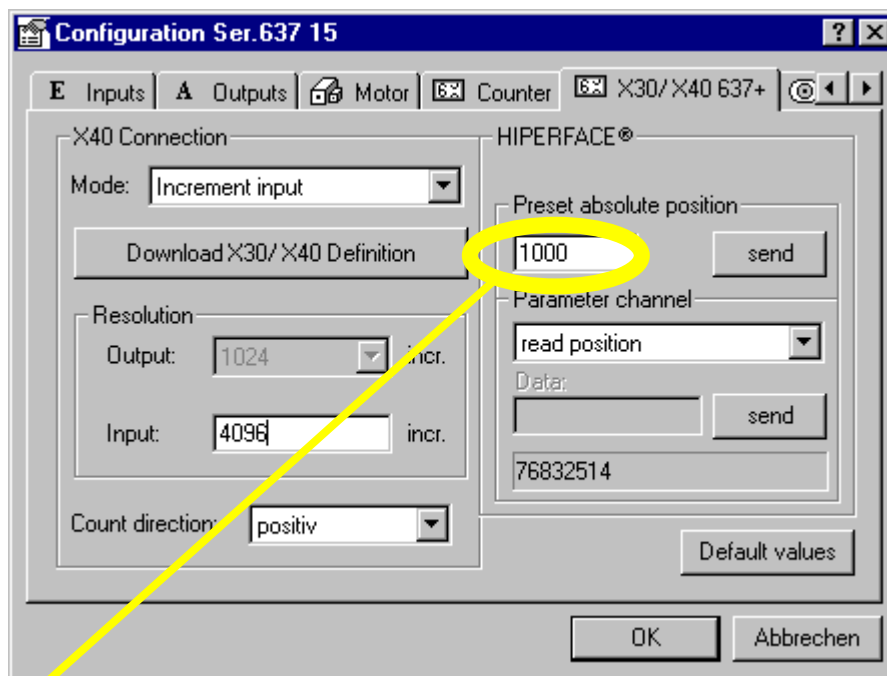
By pressing the button **Download X30/X40 Definition** the corresponding function code will be loaded and stored in the controller. Close procedure with F7 (storing of mode specifier). After Power-on Reset (US 24 V DC off and restart) the selected configuration will be active.

HIPERFACE® – Configuration

Step 4

Menu: **Configuration** \ X30/X40 637+

HIPERFACE® / Preset absolute position



The absolute position will be defined by a numerical data between 0 and 268,435,455 (increments).

By pressing the button **send** the absolute position will be set.

To prevent loss of modifications at power-off, you should store them power fail-safe! [F7]

Please note:

Negative values are not valid. The machine zero point must always be greater than the lower limit. It may never lie on the limit switch.

Travel range = (end position +) – (end position -)

Recommendation:

Reference position = (end position -) + 1000 increments

Fixing absolute position

Procedure	Installing
mathematical	mathematically by mechanical data (1 motor shaft revolution = 65536 increments)
experimental	determination by manual intervention or crawl speed along to mechanical end positions. Read out end positions in menu Diagnosis.

Absolute position value = actual position – reference position

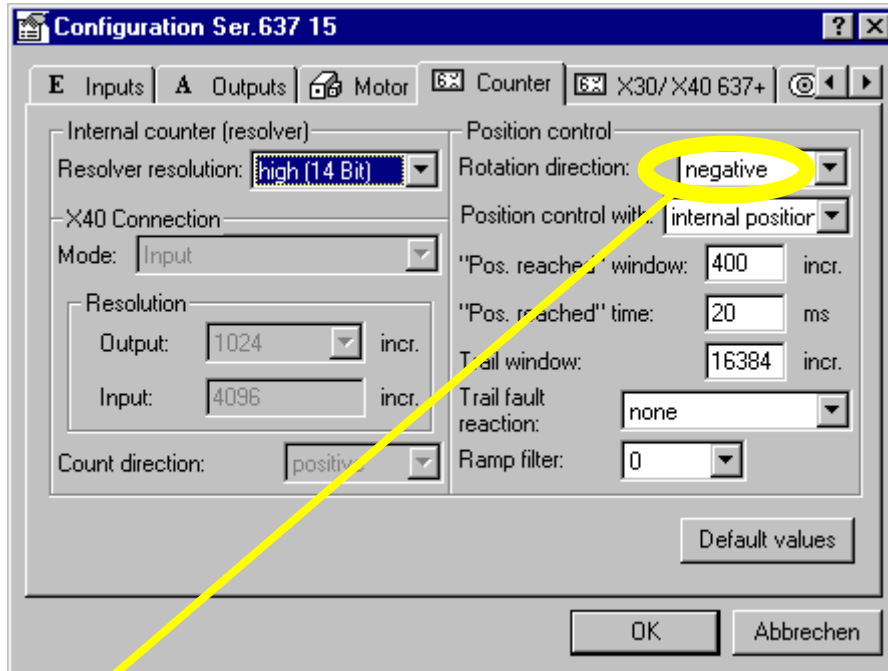


HIPERFACE® – Configuration

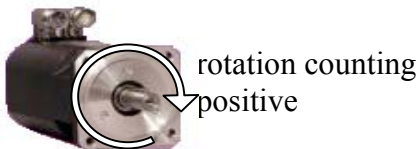
Step 5

Menu: **Configuration \ Counter**

Position control / Rotation direction:



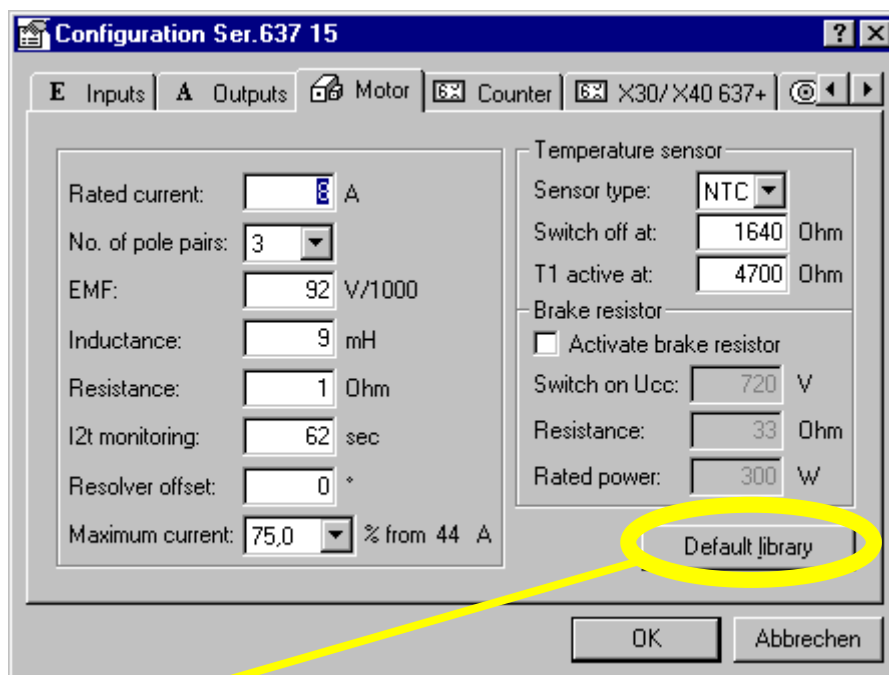
Entry of rotation direction negative (default value) results in the following rotational counting



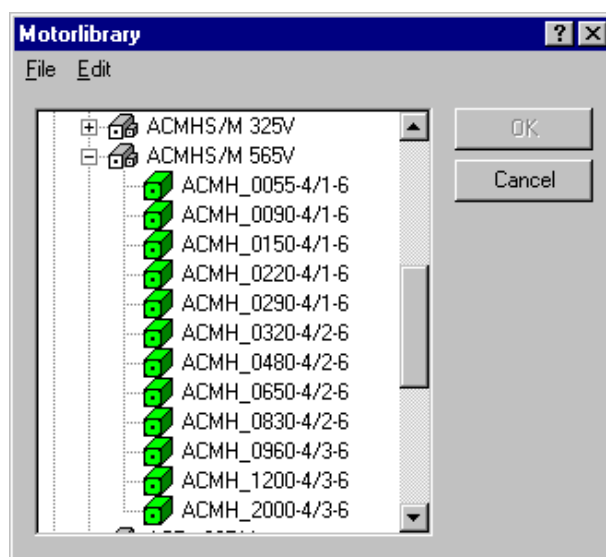
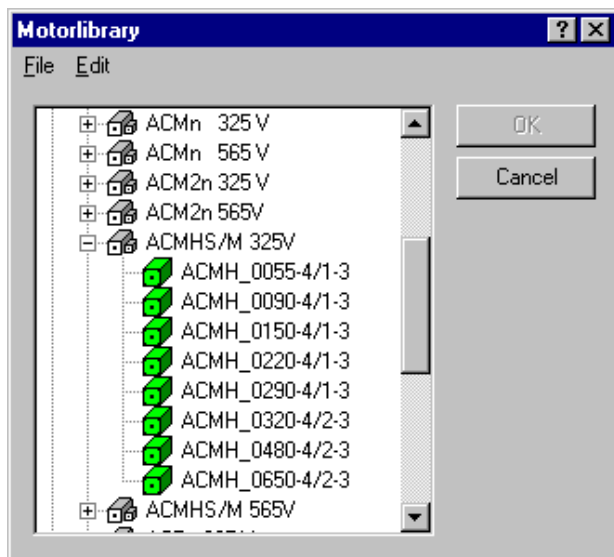
HIPERFACE® – Configuration

Step 6

Menu: **Configuration \ Motor**



Please select the corresponding HIPERFACE® motor from the default library.



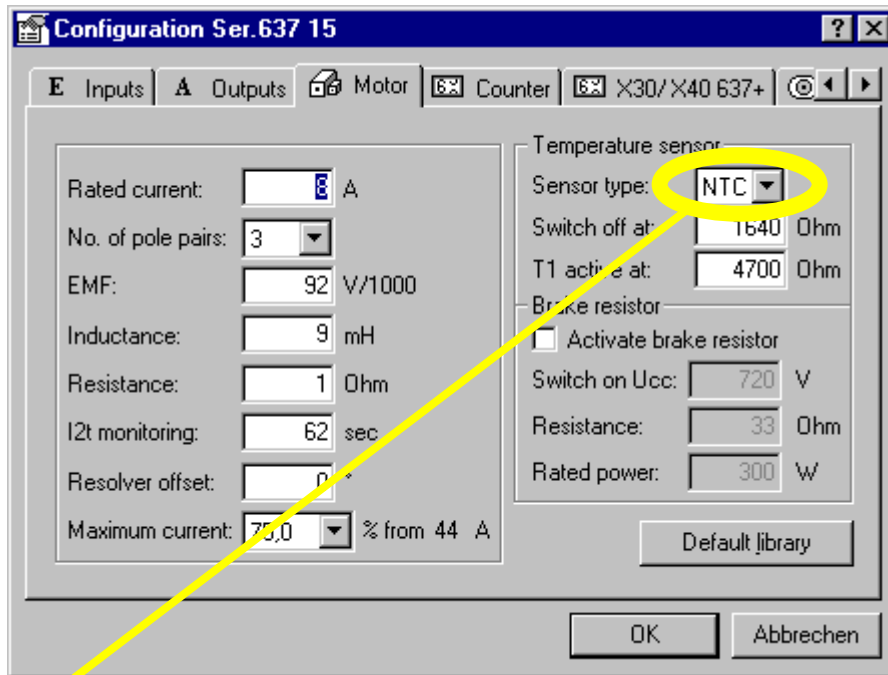


HIPERFACE® – Configuration

Step 7

Menu: **Configuration** \ **Motor**

Temperature sensor / Sensor type:



With HIPERFACE® motors, the motor–thermistor interpretation is not active in standard. Therefore the sensor type has to be adjusted to NTC.

7 Maintenance, Repair and Service



General:

Services or repairs should be carried out by **EUROTHERM** personnel only!

Please note:

Motor will be shipped with mechanical adjusted encoder (instead of resolver).
It is not possible to handle motor and encoder as separate components.

Warning:

For Speed-Loop-Tuning, too high loop-gains may generate torsion-resonances.

Important:

At initial start-up, in case of Multiturn-encoders, initial position-preset must be performed using EASYRIDER PC-software. This is also needed after replacement of HIPERFACE[®] motors.
(see Chapter 6, Step 4)

AUSTRALIA Eurotherm Pty Ltd.	Unit 10 40 Brookhollow Avenue Baulkham Hills New South Wales 2153	Tel.: +61 (2) 9634 8444 Fax: +61 (2) 96348555	http://www.eurotherm.com.au eurotherm@eurotherm.com.au
AUSTRIA Eurotherm GmbH	Geiereckstrasse 18/1 A1110 Vienna	Tel.: +43 (1) 798 7601 Fax: +43 (1) 798 7605	http://www.eurotherm.at eurotherm@eurotherm.at
BELGIUM Eurotherm BV	Rue du Val-Notre-Dame 384 B-4520 Moha	Tel.: +32 85274080 Fax: +32 85274081	sales@eurotherm-belgium.be
CANADA Eurotherm Drives	530 Seaman Street Unit 3 Stoney Creek Ontario L8E 3X7	Tel.: +1 (905) 664 8911 Fax: +1 (905) 6645869	andy.wright@eurothermdrives.com
DENMARK Eurotherm Drives Danmark	Enghavevej 9D DK-7100 Vejle	Tel.: +45 (70) 201311 Fax: +45 (70) 201312	leif.tangaa@eurotherm.se
FRANCE Eurotherm Vitesse Variable SA	15 Avenue de Norvège Villebon / Yvette 91953 Courtaboeuf Cedex Paris	Tel.: +33 1 (69) 185151 Fax: +33 1 (69) 185159	
GERMANY Eurotherm Antriebstechnik GmbH	Von-Humboldt-Strasse 10 64646 Heppenheim	Tel.: +49 (6252) 798200 Fax: +49 (6252) 798205	http://www.eurotherm.de info@eurotherm.de
HONG KONG Eurotherm Ltd.	Unit D 18/F Gee Chang Hong Centre 65 Wong Chuk Hang Road Aberdeen	Tel.: +852 2873 3826 Fax: +852 2870 0148	eurotherm@eurotherm.com.hk
INDIA Eurotherm India Ltd.	152 Developed Plots Estate Perungudi Chennai 600 096	Tel.: +91 (44) 496 1129 Fax: +91 (44) 496 1831	svs@euromds.rpgms.ems.vsnl.net.in
IRELAND Eurotherm Ireland Ltd.	I.D.A. Industrial Estate Monread Road Naas Co. Kildare	Tel.: +353 (45) 879937 Fax: +353 (45) 875123	
ITALY Eurotherm Drives SPA	Via Gran Sasso 9 20030 Lentate Sul Seveso Milano	Tel.: +39 (0362) 557308 Fax: +39 (0362) 557312	http://www.eurothermdrives.it info@eurothermdrives.it
JAPAN Nemic-Lambda KK Eurotherm Division	Denpa Building 1-11-15 Higahi Gotanda Shinagawa-Ku Tokyo 141-0022	Tel.: +81 (3) 3447 6441 Fax: +81 (3) 3447 6442	http://www.eurotherm.com/japan.htm II9K-IWM@asahi-net.or.jp
KOREA Eurotherm Korea Ltd.	3F J-Building 402-3 Poongnab-Dong Songpa-Ku Seoul 138 040	Tel.: +82 (2) 478 8507 Fax: +82 (2) 488 8508	
NETHERLANDS Eurotherm BV	Genielaan 4 2404CH Alpen aan den Rijn Holland	Tel.: +31 (172) 411 752 Fax: +31 (172) 417 260	http://www.eurotherm.nl sales@eurotherm.nl
NORWAY Eurotherm Drives Norge	Postboks 650 1411 Koltbotn Oslo	Tel.: +47 (66) 992550 Fax: +47 (66) 803131	eurotherm@online.no
SPAIN Eurotherm Espana SA	Calle La Granja 74 Pol. Ind. Alcobendas 28108 Madrid	Tel.: +34 (91) 6616001 Fax: +34 (91) 6619093	eurotherm@teleline.es
SWEDEN Eurotherm Drivteknik AB	Box 9084 S-30013 Halmstad	Tel.: +46 (35) 177300 Fax: +46 (35) 108407	http://www.eurotherm.se info.drives@eurotherm.se
SWITZERLAND Eurotherm Produkte (Schweiz) AG	Schwerzistrasse 20 CH 8807 Freienbach	Tel.: +41 (55) 4154400 Fax: +41 (55) 4154415	epsag@eurotherm.ch
UK Eurotherm Drives Ltd.	New Courtwick Lane Littlehampton West Sussex BN17 7RZ	Tel.: +44 (0) 1903 737000 Fax: +44 (0) 1903 737100	http://www.eurotherm.co.uk info@eurotherm.co.uk
U.S.A. Eurotherm Drives Inc.	9225 Forsyth Park Drive Charlotte North Carolina 28273	Tel.: +1 (704) 588 3246 Fax: +1 (704) 588 3249	http://www.eurothermdrives.com russ.fulle@eurothermdrives.com

Eurotherm Antriebstechnik GmbH

Im Sand 14 • D-76669 Bad Schönborn • Telefon 07253-940 40 • Fax 07253-940 499

E-Mail: info@eurotherm.de • Internet <http://www.eurotherm.de>